

Putative mitochondrial α -ketoglutarate-dependent dioxygenase Fmp12 controls utilization of proline as an energy source in *Saccharomyces cerevisiae*

Ikuhisa Nishida, Daisuke Watanabe, and Hiroshi Takagi*

Graduate School of Biological Sciences, Nara Institute of Science and Technology, 8916-5 Takayama, Ikoma, Nara 630-0192, Japan.

* Corresponding Author:

[Hiroshi Takagi](#), Graduate School of Biological Sciences, Nara Institute of Science and Technology; 8916-5 Takayama, Ikoma, Nara 630-0192; Japan; Tel: +81 743 72 5420; Fax: +81 743 72 5429; E-mail: hiro@bs.naist.jp

ABSTRACT The amino acid proline functions as a nitrogen source and as a stress protectant in the yeast *Saccharomyces cerevisiae*. However, utilization of proline as a carbon source in *S. cerevisiae* cells has not been studied yet. In the process of study on the physiological roles of the found-in-mitochondrial-proteome (FMP) genes in proline metabolism, we found that $\Delta fmp12$ cells could grow better than wild-type cells on agar plate medium containing proline as the sole nitrogen and carbon sources. In contrast, overexpression of FMP12 negatively affected cell growth under the same condition. The Fmp12 protein was localized in the mitochondria and was constitutively expressed. Deletion of the genes that encode mitochondrial enzymes, such as proline dehydrogenase (PUT1), Δ^1 -pyrroline-5-carboxylate dehydrogenase (PUT2), alanine transaminase (ALT1), and α -ketoglutarate dehydrogenase subunit (KGD1), abolished the enhanced cell growth in $\Delta fmp12$. These results provided the first evidence that proline can be utilized as a carbon source via the mitochondrial proline metabolic pathway and the subsequent tricarboxylic acid (TCA) cycle in *S. cerevisiae*. The function of Fmp12, which has a similarity with α -ketoglutarate-dependent dioxygenases of the yeast *Candida* species and human, might inhibit cell growth by skipping the ATP production step of the TCA cycle.

INTRODUCTION

Proline is an important amino acid that is used not only for a nitrogen source but also a stress protectant in the budding yeast *Saccharomyces cerevisiae* [1]. Therefore, the metabolic regulation of proline, including biosynthesis, degradation, and cellular localization, has been of great interest. *S. cerevisiae* cells synthesize proline from glutamate by three cytoplasmic enzymes, the γ -glutamyl kinase Pro1, the γ -glutamyl phosphate reductase Pro2, and the Δ^1 -pyrroline-5-carboxylate (P5C) reductase Pro3 [2]. In most of eukaryote cells, including *S. cerevisiae*, proline is degraded predominantly in mitochondria, although the responsible import mechanism into mitochondria has not been clarified yet. The mitochondrial proline dehydrogenase Put1 converts proline into P5C, which is then processed into glutamate by the P5C dehydrogenase Put2 [3]. As glutamate can be converted into α -ketoglutarate, a tricarboxylic acid (TCA)-cycle intermediate, by deamination or transamination [4, 5], it is presumed that proline can be

used as a carbon source for ATP production. Nevertheless, there have been few reports on the growth of *S. cerevisiae* cells in the presence of proline or the other amino acids as the sole carbon source. In contrast, several kinds of bacteria and xylose-fermenting yeast *Scheffersomyces stipitis* have been reported to grow by utilization of amino acids as the sole carbon source via glutamate dehydrogenase or amino acid transaminase (AAT) [6-9]. Based on these facts, *S. cerevisiae* cells might possess an unknown metabolic regulatory mechanism that restricts the consumption of amino acids as carbon sources.

To find novel regulators of intracellular proline, we previously performed a transcriptomic analysis of the *S. cerevisiae put1* mutant in response to exogenous proline [10]. As a result, the accumulation of intracellular proline led to downregulation of the proline-synthetic genes and upregulation of the genes that encode the proline-degradative enzymes, the known proline permeases on the plasma membrane, and the Avt proteins associated with bidirec-

doi: 10.15698/mic2016.10.535

Received originally: 12.07.2016;

in revised form: 15.08.2016,

Accepted 19.08.2016,

Published 19.09.2016.

Keywords: yeast *Saccharomyces cerevisiae*, proline, carbon source, Fmp12, mitochondria, α -ketoglutarate-dependent dioxygenase.

Abbreviations:

AAT - amino acid transaminase,

FMP - found-in-mitochondrial-proteome,

TCA - tricarboxylic acid.

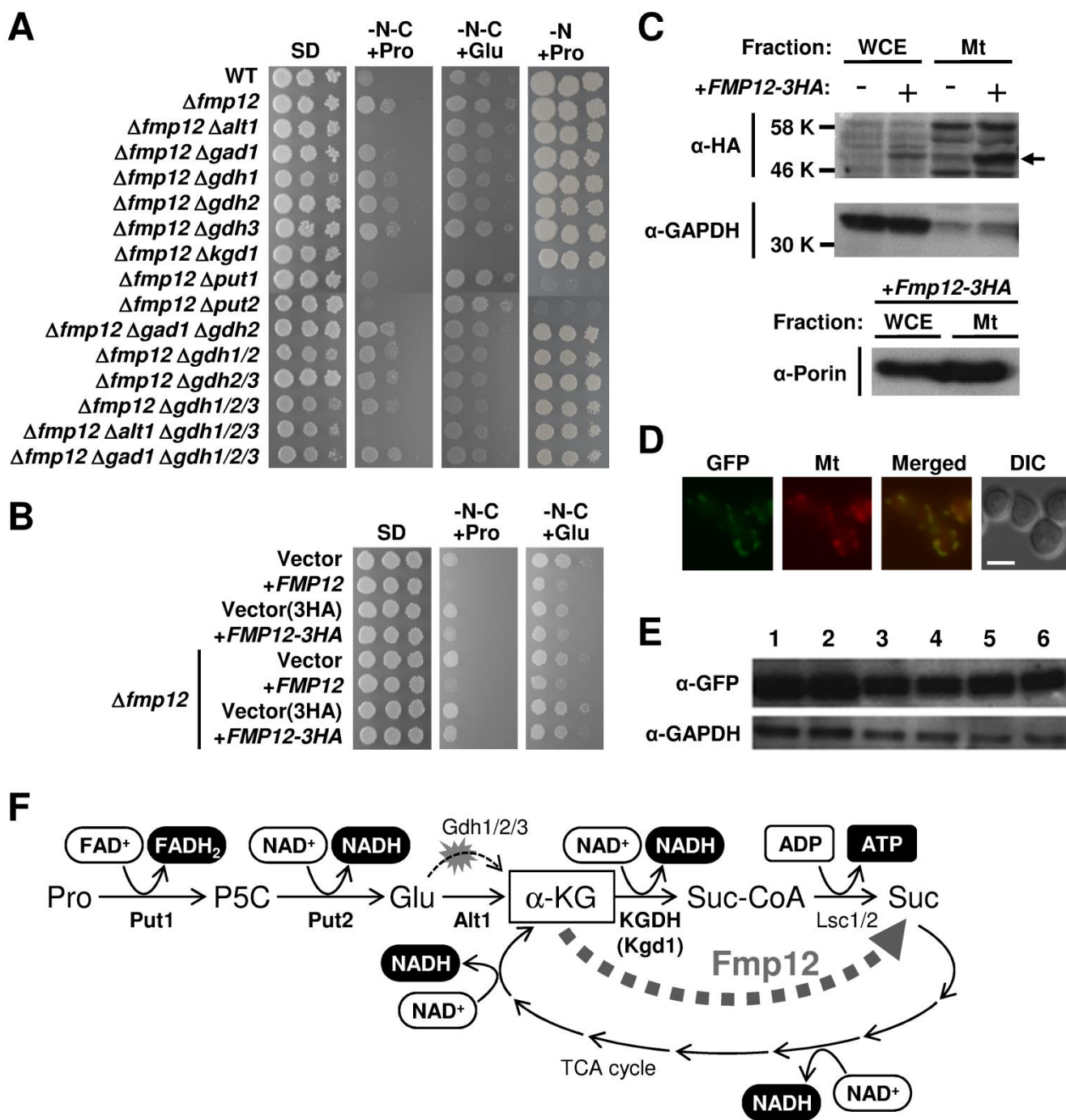


FIGURE 1: Proline/glutamate metabolism as the sole carbon source and its control mediated by Fmp12. (A) Growth phenotypes of *S. cerevisiae* wild-type strain (BY4741) and its deletion mutants on SD, SD-N-C+Pro, SD-N-C+Glu, and SD-N+Pro media. **(B)** Growth phenotypes of *S. cerevisiae* BY4741u or BY4741u $\Delta fmp12$ cells harboring the empty vector (pVV208, pVV209) or overexpressing *FMP12* (pVV208-FMP12, pVV209-FMP12) on SD, SD-N-C+Pro, and SD-N-C+Glu media. **(C)** Detection of Fmp12-3HA in the whole cell extract (WCE) and in the mitochondria fraction (Mt). The symbol -/+ indicates the sample from the cells without or with expression of Fmp12-3HA from pVV209-FMP12. The arrow indicates the predicted size of Fmp12-3HA truncated at its amino-terminal MTS. GAPDH and porin were analyzed as controls of cytoplasmic and mitochondrial proteins, respectively. **(D)** Subcellular localization of Fmp12-yeGFP by fluorescent microscopy. GFP signals (GFP), MitoTracker signals (Mt), merged signals (Merged), and differential interference contrast images (DIC) are shown. The scale bar represents 5 μ m. **(E)** Western blot analysis of Fmp12-yeGFP under different nutritional conditions. *S. cerevisiae* FMP12-yeGFP cells were cultivated on solid media at 30°C for 5 days. The numbers indicate the media as follows: 1: SD, 2: SD+Pro, 3: SD-N-C+Pro, 4: SD-C+Pro, 5: SD-N-C+Glu, 6: SD-C+Glu. GAPDH was used as a protein-loading control. **(F)** Energy production by proline metabolism as the sole carbon source in *S. cerevisiae*. Pro: proline, P5C: Δ^1 -pyrroline-5-carboxylate, Glu: glutamate, α -KG: α -ketoglutarate, Suc-CoA: succinyl-CoA, Suc: succinate.

tional transport of proline across the vacuolar membrane. In this study, we analyzed another class of the upregulated genes that encode poorly-understood proteins originally found in the mitochondrial proteome analyses [11, 12], because these genes (the found-in-mitochondrial-proteome (*FMP*) genes) and their products (the Fmp proteins) might be involved in novel regulatory mechanisms of proline localization or metabolism in the mitochondria.

RESULTS

To examine cell growth in the presence of proline as the sole carbon and nitrogen sources, we used minimal synthetic-defined (SD) medium without ammonium sulfate and glucose and with proline (SD-N-C+Pro). Under such a severe nutrient condition, BY4741 wild-type cells in which the auxotrophic mutations were complemented could only slightly grow during 7-day incubation (Figure 1A). Interestingly, among the *FMP* genes (*FMP12/16/21/27/33/41/45/46/48/52*) that were upregulated by exogenous proline in our previous study [10], deletion of the *FMP12/AIM17* gene was found to markedly enhance the growth on SD-N-C+Pro agar plates (Figure 1A), as well as on SD-C+Pro agar plates, in which proline and ammonium sulfate was added as the sole carbon and nitrogen source, respectively (data not shown). In contrast, overexpression of the *FMP12* gene inhibited the growth on SD-N-C+Pro agar plates (Figure 1B). Similar results were obtained from monosodium glutamate as the sole carbon and nitrogen sources (SD-N-C+Glu) instead of proline, although yeast cells grew better in SD-N-C+Glu than in SD-N-C+Pro. These data suggest the presence of the proline/glutamate metabolic pathway as the sole carbon source in *S. cerevisiae*, although this pathway might be strictly restricted by an unknown mechanism involving Fmp12.

Fmp12 was originally identified in high-throughput mitochondrial proteome analyses [11, 12]. To determine the subcellular localization of Fmp12, we used HA- or yeGFP-tagged Fmp12 at the carboxyl terminus. Overexpression of Fmp12-3HA was shown to inhibit cell growth on SD-N-C+Pro or SD-N-C+Glu medium (Figure 1B), suggesting that carboxyl-terminus tagged Fmp12 proteins partly functions. It is also noted that the growth of Fmp12-yeGFP-expressing cells on SD-N-C+Pro or SD-N-C+Glu medium was comparable to that of wild-type cells (data not shown). In a western blot analysis (Figure 1C), the HA signals dependent on overexpression of Fmp12-3HA were detected at the lower molecular weight than we expected (approximately 58 kDa) both in the whole cell extract and in the mitochondrial fraction. This is probably because amino-terminal 46 amino acid residues, which correspond to a mitochondrial-targeting signal (MTS) predicted by MitoProt II analysis (<https://ihg.gsf.de/ihg/mitoprot.html>), were truncated [13]. As shown in Figure 1C, a stronger signal of Fmp12-3HA was observed in the mitochondria fraction, which was indicated by a lower level of the cytoplasmic glyceraldehyde-3-phosphate dehydrogenase (GAPDH) and a higher level of the mitochondrial porin protein, than in the whole cell extract. Additionally, the fluorescence microscope observa-

tion revealed that Fmp12-yeGFP-derived fluorescent signals colocalized with the MitoTracker signals (Figure 1D). Based on these results, it was concluded that Fmp12 specifically localizes at the mitochondria. The expression level of Fmp12-yeGFP was not significantly affected by exogenous carbon or nitrogen sources (Figure 1E), although the *FMP12* mRNA was previously found to be upregulated by the addition of proline to the medium [10].

To identify the metabolic pathway of proline as a carbon source in $\Delta fmp12$ cells, we examined the effects of gene deletions on the growth on SD-N-C+Pro medium (Figure 1A). Enhanced growth of $\Delta fmp12$ cells was almost fully suppressed by a single disruption of the *PUT1* (encoding proline dehydrogenase), *PUT2* (encoding P5C dehydrogenase), *ALT1* (encoding mitochondrial alanine transaminase) [14], or *KGD1* (encoding E1 component of the mitochondrial α -ketoglutarate dehydrogenase (KGDH) complex) [15] gene, but not affected by single or combined deletion of the *GDH2* (encoding NAD⁺-dependent glutamate dehydrogenase) and *GDH1/3* (encoding NADP⁺-dependent glutamate dehydrogenases) genes involved in deamination of glutamate and its reverse reaction, respectively [5, 16, 17], or by the *GAD1* (encoding glutamate decarboxylase) gene, whose product catalyzes the first step of the γ -aminobutyrate (GABA) shunt [18] that bypasses the TCA cycle. Similar results were obtained on SD-N-C+Glu medium, although disruption of the *PUT1* or *PUT2* gene did not abolish the growth of $\Delta fmp12$ cells. Thus, it was demonstrated that utilization of proline as a carbon source is specifically carried out by mitochondrial enzymes Put1 and Put2 for conversion into glutamate, by mitochondrial AATs, such as the alanine transaminase Alt1, for conversion of glutamate into α -ketoglutarate, and subsequently by the TCA cycle (Figure 1F). Since Put1 and Put2, but not Alt1 and Kgd1, are necessary for utilization of proline as a nitrogen source judging from the growth on SD-N+Pro medium (Figure 1A), AATs and KGDH were identified as specific factors required for utilization of proline as the sole carbon source.

DISCUSSION

Compartmentalization of metabolic enzymes might contribute to optimization of the corresponding metabolic efficiency. If the enzymes with different subcellular localizations are engaged in a metabolic pathway, intermediate compounds must be properly translocated to the sites or the organelles in advance to individual reactions. Although cells might adopt such spatial regulations to constitute highly elaborate metabolic networks, enforcement of a single metabolic pathway is likely achieved by collecting all related enzymes together in a single intracellular area. For instance, it was recently reported that artificial overexpression of the Ehrlich pathway enzymes in mitochondria led to a striking increase in the fusel alcohol production in *S. cerevisiae* [19].

In this study, we discovered a novel proline metabolic pathway essentially mediated by the mitochondrial enzymes Put1, Put2, Alt1, KGDH, and TCA-cycle enzymes (Figure 1F). This compartmentalization might maximize cellular

energy production from proline under nutrient-poor environments. The major problem to be solved is how proline is imported into mitochondria. Effects of the mitochondrial transporters on subcellular distribution of proline should be biochemically analyzed in future. It is also noteworthy that the mitochondrial alanine transaminase Alt1 is used for the conversion of glutamate into α -ketoglutarate in *S. cerevisiae*, while glutamate dehydrogenases are responsible in known proline utilization pathways of other yeast species [8]. Proline utilization via the alanine transaminase activity has been reported only in parasitic protozoan *Trypanosoma brucei* [20] and tsetse fly [21], which might exhibit similar physiological and nutritional conditions as *S. cerevisiae* cells when proline is the primary carbon source.

To understand how the deletion of *FMP12* enhances cell growth on SD-N-C+Pro medium, we further focused on its molecular function. The Fmp12 protein shows a marked similarity to α -ketoglutarate-dependent dioxygenases conserved from bacteria to human [22], such as the pathogenic yeast *Candida albicans* γ -butyrobetaine dioxygenase Bbh1 and trimethyllysine dioxygenase Bbh2 mediating the carnitine biosynthesis pathway [23]. They commonly couple decarboxylation of α -ketoglutarate into succinate to hydroxylation of numerous kinds of cosubstrates (*e.g.* γ -butyrobetaine and trimethyllysine). Although the specific substrate for Fmp12 has not been known yet, the Fmp12-dependent decarboxylation of α -ketoglutarate might enable to bypass the TCA-cycle reactions mediated by KGDH (from α -ketoglutarate to succinyl-CoA) and succinyl-CoA ligase (from succinyl-CoA to succinate) (Figure 1F). If α -ketoglutarate prefers Fmp12 to KGDH, however, NADH production via KGDH and ATP production via succinyl-CoA ligase might be skipped. In particular, when proline is the sole carbon source, the only substrate-level phosphorylation process for ATP production might be impaired by the Fmp12 activity. Therefore, the deletion of *FMP12* might enhance energy production and cell growth on SD-N-C+Pro medium. To prove this hypothesis, the affinity of Fmp12 or KGDH for α -ketoglutarate should be enzymatically determined. If this is the case, it could be concluded that Fmp12 plays a critical inhibitory role in utilization of amino acids as a carbon source. Nutrient preferences of *S. cerevisiae* cells are strictly determined by several mechanisms including carbon/nitrogen catabolite repression [24, 25]. Analysis of this novel Fmp12 protein will accelerate the understanding of the coordinated mechanism of nutrient sensing and growth control in *S. cerevisiae*.

MATERIALS AND METHODS

Strains

Yeast strains used in this study were the *S. cerevisiae* strains with a BY4741 (*MATa his3 Δ 1 leu2 Δ 0 met15 Δ 0 ura3 Δ 0*) background (provided by Open Biosystems or National Bio-Resource Project (NBRP) of the MEXT, Japan) and BY4741u (*MATa ura3 Δ 0*) background (constructed by S. Morigasaki). The yeast strains used in this study are listed in Table 1. In strain BY4741, the original genes on the chromosomes were disrupted by a standard PCR-based gene disruption or tagging method. Disruption cassettes amplified by PCR with pFA6a-

GFP(S65T)-His3MX6 (Addgene), pFA6a-hphNT1 (Euroscarf), pFA6a-natNT2 (Euroscarf), or an S1-AUR1-S2 fragment derived from pAUR123 (Takara Bio) using gene-specific oligonucleotide primers were integrated into each locus of the target genes. Fmp12 was carboxyl terminally-tagged with yeGFP using pYM25 (Euroscarf). Gene disruptants were selected on YPD medium containing G418 (200 μ g/ml), clonNAT (100 μ g/ml), hygromycin B (300 μ g/ml), or aureobasidin A (0.25 μ g/ml). SC-His medium was used to obtain strains disrupted with *CgHIS3* containing disruption cassettes. Correct disruption was confirmed by colony PCR using up and down primers of the target genes. When appropriate, required empty vectors pAD4 (provided by J. Nikawa), pRS416MET15 (constructed by S. Morigasaki), pRS416CgHIS3MET15 (constructed by S. Morigasaki) were introduced to complement the auxotrophy. *E. coli* strains DH5 α (*F λ Φ 80lacZ Δ M15 Δ (lacZYA argF)U169 deoR recA1 endA1 hsdR17(*r_km_k⁺*) supE44 thi-1 gyrA96*) and DB3.1 (*F⁻ gyrA462 endA1 Δ (sr1-recA) mcrB mrr hsdS20(*r_B⁻ m_B⁻*) supE44 ara-14 galK2 lacY1 proA2 rpsL20(SmR) xyl-5 λ - leu mt1*) were used for construction of the plasmids.

Plasmids

For overexpression of Fmp12, we constructed plasmids containing a Tet-Off system [26]. BP and LR recombination reaction procedures were performed as recommended by Invitrogen (on the Internet at www.invitrogen.com). Plasmid BG1805-FMP12 (Addgene) containing oligonucleotides of *FMP12* without stop codon flanked with attB1 or attB2 sequences was cloned into pDONR221 (Invitrogen) using the BP reaction. The cloned fragment was then inserted into the empty vector pVV208 (*CEN URA3 pTetO7*) or pVV209 (*CEN URA3 pTetO7 3HA*) [26] by the LR reaction.

Culture Media

The media used for growth of *S. cerevisiae* were a nutrient medium YPD (1% yeast extract, 2% peptone, and 2% glucose) and a synthetic minimal medium SD (0.17% yeast nitrogen base without amino acids and ammonium sulfate (Difco Laboratories), 0.5% ammonium sulfate, and 2% glucose). When appropriate, 3% proline or 3% monosodium glutamate were added to the media as the sole carbon and nitrogen source. For SD-N+Pro medium, 0.1% proline was added instead of ammonium. If necessary, 2% agar was added to solidify the medium. All amino acids used in this study are L-form. *E. coli* cells were grown in Luria-Bertani (LB) complete medium (0.5% Bacto yeast extract, 1% Bacto tryptone (Difco Laboratories), 1% NaCl, pH 7.0) with 100 μ g/ml ampicillin or 50 μ g/ml kanamycin.

Growth Test

Fresh yeast cells were cultured in SD liquid medium for 1 day at 30°C. After washing the cells with distilled water three times, cells corresponding to an OD₆₀₀ of 2.0 and serial dilution of 10⁻¹ to 10⁻³ were spotted onto the agar plates and were incubated at 30°C for several days.

Fluorescent Microscopy

Yeast cells expressing Fmp12-yeGFP were grown to reach an OD₆₀₀ of 1 at 25°C in SD liquid medium and subjected to 40 nM MitoTracker Orange CMTMRos (Invitrogen) for 30 min to visualize the mitochondria. The cells were then harvested and washed with distilled water. Fmp12-yeGFP and MitoTracker

TABLE 1. Yeast strains in this study.

Strain	Genotype
BY4741	<i>MATa his3Δ1 leu2Δ0 met15Δ0 ura3Δ0</i>
<i>Δfmp12</i>	BY4741 <i>Δfmp12::kanMX4</i>
<i>Δfmp12 Δalt1</i>	BY4741 <i>Δfmp12::kanMX4 Δalt1::hphNT1</i>
<i>Δfmp12 Δgad1</i>	BY4741 <i>Δfmp12::kanMX4 Δgad1::hphNT1</i>
<i>Δfmp12 Δgdh1</i>	BY4741 <i>Δfmp12::kanMX4 Δgdh1::hphNT1</i>
<i>Δfmp12 Δgdh2</i>	BY4741 <i>Δfmp12::kanMX4 Δgdh2::hphNT1</i>
<i>Δfmp12 Δgdh3</i>	BY4741 <i>Δfmp12::kanMX4 Δgdh3::hphNT1</i>
<i>Δfmp12 Δkgd1</i>	BY4741 <i>Δfmp12::kanMX4 Δkgd1::hphNT1</i>
<i>Δfmp12 Δput1</i>	BY4741 <i>Δfmp12::kanMX4 Δput1::hphNT1</i>
<i>Δfmp12 Δput2</i>	BY4741 <i>Δfmp12::kanMX4 Δput2::hphNT1</i>
<i>Δfmp12 Δgad1 Δgdh2</i>	BY4741 <i>Δfmp12::kanMX4 Δgad1::hphNT1 Δgdh2::natNT2</i>
<i>Δfmp12 Δgdh1/2</i>	BY4741 <i>Δfmp12::kanMX4 Δgdh1::hphNT1 Δgdh2::natNT2</i>
<i>Δfmp12 Δgdh2/3</i>	BY4741 <i>Δfmp12::kanMX4 Δgdh2::natNT2 Δgdh3::hphNT1</i>
<i>Δfmp12 Δgdh1/2/3</i>	BY4741 <i>Δfmp12::kanMX4 Δgdh1::AUR1-C Δgdh2::natNT2 Δgdh3::hphNT1</i>
<i>Δfmp12 Δalt1 Δgdh1/2/3</i>	BY4741 <i>Δfmp12::kanMX4 Δalt1::HISMX6 Δgdh1::AUR1-C Δgdh2::natNT2 Δgdh3::hphNT1</i>
<i>Δfmp12 Δgad1 Δgdh1/2/3</i>	BY4741 <i>Δfmp12::kanMX4 Δgad1::HISMX6 Δgdh1::AUR1-C Δgdh2::natNT2 Δgdh3::hphNT1</i>
<i>Fmp12-yeGFP</i>	BY4741 <i>FMP12::FMP12-yeGFP-hphNT1</i>
BY4741u	<i>MATa ura3Δ0</i>
BY4741u <i>Δfmp12</i>	<i>MATa ura3Δ0 Δfmp12::kanMX4</i>

signals were observed under a fluorescence microscope Axiovert 200M (Carl Zeiss). Images were captured with a HBO 100 Microscope Illuminating System (Carl Zeiss) digital camera.

Western Blotting Analysis

Yeast cells grown on agar plates for 5 days at 30°C were collected, washed with 10% trichloroacetic acid (TCA), resuspended by 100 μl of 10% TCA, and disrupted with 0.5-mm glass beads in a MultiBead Shocker (Yasui Kikai) with seven cycles of running at 2,500 rpm for 60 seconds and pausing for 60 seconds. After adding 200 μl of 10% TCA to the tube, the pellets were separated from the glass beads by centrifugation. The obtained pellets were resuspended in 150 μl of sample buffer (50 mM Tris-HCl (pH 6.8), 2% sodium dodecyl sulfate, 4.5% glycerol, 0.01% bromophenol blue, 0.7 M 2-mercaptoethanol) and 150 μl of 1 M Tris-HCl (pH 8.0) for neutralization. After boiling for 5 min at 95°C, the supernatant was obtained by centrifugation and the protein concentration

was measured by using a Bio-Rad protein assay kit (Bio-Rad). The mitochondrial fraction was isolated according to the method described previously [27] with minor modification. In the case of the Fmp12-3HA protein, lysates of yeast cells grown in lactate minimal medium (0.17% Bacto yeast nitrogen base without amino acids and ammonium sulphate (Difco Laboratories), 0.5% ammonium sulphate, 2% dropout mix, 0.05% glucose, 0.05% CaCl₂, 0.05% NaCl, 0.03% MgCl₂, 0.1% KH₂PO₄, 2% lactate (pH 5.6)) or the mitochondrial fractions were directly mixed with sample buffer and boiled. Approximately 5 μg of total proteins were loaded onto a 10% SDS-polyacrylamide gel and electrophoresed with a constant voltage at 80-120 V. Proteins were transferred to a nitrocellulose membrane (Hybond-C; GE Healthcare) in blotting buffer (48 mM Tris, 385 mM glycine, 0.1% SDS, 20% methanol) (115 V, 400 mA, 1 h). The membrane was soaked in blocking buffer (Tris-buffered saline with 0.3% Tween-20, 3% skim milk, 0.03% sodium azide (pH 8.0)) for more than 1 h. Anti-GFP mouse

monoclonal (Roche Diagnostics), anti-HA rabbit polyclonal (Santa Cruz Biotechnology), anti-yeast GAPDH rabbit polyclonal (Nordic Immunology) and anti-yeast porin mouse monoclonal (Invitrogen) antibodies were used as primary antibodies, and horseradish peroxidase-fused anti-mouse or anti-rabbit immunoglobulin G (Promega) were used as a secondary antibody. Detection was performed using the Pierce ECL Plus Western Blotting Substrate (Thermo Fisher).

ACKNOWLEDGMENTS

We thank Dr. Junichi Nikawa, Dr. Susumu Morigasaki, and the National BioResource Project (NBRP), Japan for providing plasmids and yeast strains. This work was supported in part by Grant-in-Aid for JSPS Fellows (11J07980) to I.N. and the Asahi Group Sciences Foundation (Life Science field, 2013) to H.T.

REFERENCES

1. Takagi H (2008). Proline as a stress protectant in yeast: physiological functions, metabolic regulations, and biotechnological applications. *Appl Microbiol Biotech* 81(2): 211-223.
2. Tomenchok DM and Brandriss MC (1987). Gene-enzyme relationships in the proline biosynthetic pathway of *Saccharomyces cerevisiae*. *J Bacteriol* 169(12): 5364-5372.
3. Brandriss MC and Magasanik B (1979). Genetics and physiology of proline utilization in *Saccharomyces cerevisiae*: enzyme induction by proline. *J Bacteriol* 140(2): 498-503.
4. Green DE, Leloir LF, and Nocito V (1945). Transaminases. *J Biol Chem* 161: 559-582.
5. Miller SM and Magasanik B (1990). Role of NAD-linked glutamate dehydrogenase in nitrogen metabolism in *Saccharomyces cerevisiae*. *J Bacteriol* 172(9): 4927-4935.
6. Romano AH and Nickerson WJ (1958). Utilization of amino acids as carbon sources by *Streptomyces fradiae*. *J Bacteriol* 75(2): 161-166.
7. Ekena K and Maloy S (1990). Regulation of proline utilization in *Salmonella typhimurium*: how do cells avoid a futile cycle? *Mol Gen Genet* 220(3): 492-494.
8. Freese S, Vogts T, Speer F, Schäfer B, Passoth V, and Klinner U (2011). C- and N-catabolic utilization of tricarboxylic acid cycle-related amino acids by *Scheffersomyces stipitis* and other yeasts. *Yeast* 28(5): 375-390.
9. Moses S, Sinner T, Zapras A, Stöveken N, Hoffmann T, Belitsky BR, Sonenshein AL, and Bremer E (2012). Proline utilization by *Bacillus subtilis*: uptake and catabolism. *J Bacteriol* 194(4): 745-758.
10. Nishida I, Watanabe D, Tsolmonbaatar A, Kaino T, Ohtsu I, and Takagi H (2016). Vacuolar amino acid transporters upregulated by exogenous proline and involved in cellular localization of proline in *Saccharomyces cerevisiae*. *J Gen Appl Microbiol* 62(3): 132-139.
11. Sickmann A, Reinders J, Wagner Y, Joppich C, Zahedi R, Meyer HE, Schönfisch B, Perschil I, Chacinska A, Guiard B, Rehling P, Pfanner N, and Meisinger C (2003). The proteome of *Saccharomyces cerevisiae* mitochondria. *Proc Natl Acad Sci USA* 100(23): 13207-13212.
12. Reinders J, Zahedi RP, Pfanner N, Meisinger C, and Sickmann A (2006). Toward the complete yeast mitochondrial proteome: multidimensional separation techniques for mitochondrial proteomics. *J Proteome Res* 5(7): 1543-1554.
13. Claros MG and Vincens P (1996). Computational method to predict mitochondrially imported proteins and their targeting sequences. *Eur J Biochem* 241(3): 779-786.

CONFLICT OF INTEREST

The authors declare no conflict of interest.

COPYRIGHT

© 2016 Nishida *et al.* This is an open-access article released under the terms of the Creative Commons Attribution (CC BY) license, which allows the unrestricted use, distribution, and reproduction in any medium, provided the original author and source are acknowledged.

Please cite this article as: Ikuhisa Nishida, Daisuke Watanabe, and Hiroshi Takagi (2016). Putative mitochondrial α -ketoglutarate-dependent dioxygenase Fmp12 controls utilization of proline as an energy source in *Saccharomyces cerevisiae*. *Microbial Cell* 3(10): 522-528. doi: 10.15698/mic2016.10.535

14. García-Campusano F, Anaya VH, Robledo-Arratia L, Quezada H, Hernández H, Riego L, González A (2009). *ALT1*-encoded alanine aminotransferase plays a central role in the metabolism of alanine in *Saccharomyces cerevisiae*. *Can J Microbiol* 55(4): 368-374.
15. Repetto B and Tzagoloff A (1989). Structure and regulation of *KGD1*, the structural gene for yeast α -ketoglutarate dehydrogenase. *Mol Cell Biol* 9(6): 2695-2705.
16. Moye WS, Amuro N, Rao JK, and Zalkin H (1985). Nucleotide sequence of yeast *GDH1* encoding nicotinamide adenine dinucleotide phosphate-dependent glutamate dehydrogenase. *J Biol Chem* 260(14): 8502-8508.
17. Avendaño A, Deluna A, Olivera H, Valenzuela L, and Gonzalez A (1997). *GDH3* encodes a glutamate dehydrogenase isozyme, a previously unrecognized route for glutamate biosynthesis in *Saccharomyces cerevisiae*. *J Bacteriol* 179(17): 5594-5597.
18. Coleman ST, Fang TK, Rovinsky SA, Turano FJ, and Moye-Rowley WS (2001). Expression of a glutamate decarboxylase homologue is required for normal oxidative stress tolerance in *Saccharomyces cerevisiae*. *J Biol Chem* 276(1): 244-250.
19. Avalos JL, Fink GR, and Stephanopoulos G (2013). Compartmentalization of metabolic pathways in yeast mitochondria improves the production of branched-chain alcohols. *Nat Biotechnol* 31(4): 335-341.
20. Spitznagel D, Ebikeme C, Biran M, Nic a' Bháird N, Bringaud F, Henehan GT, and Nolan DP (2009). Alanine aminotransferase of *Trypanosoma brucei* - a key role in proline metabolism in procyclic life forms. *FEBS J* 276(23): 7187-7199.
21. Bursell E (1963). Aspects of the metabolism of amino acids in the tsetse fly, *Glossina* (Diptera). *J Insect Physiol* 9(4): 439-452.
22. Hausinger RP (2004). Fe(II)/ α -ketoglutarate-dependent hydroxylases and related enzymes. *Crit Rev Biochem Mol Biol* 39(1): 21-68.
23. Strijbis K, van Roermund CW, Hardy GP, van den Burg J, Bloem K, de Haan J, van Vlies N, Wanders RJ, Vaz FM, and Distel B (2009). Identification and characterization of a complete carnitine biosynthesis pathway in *Candida albicans*. *FASEB J* 23(8): 2349-2359.
24. Ljungdahl PO and Daignan-Fornier B (2012). Regulation of amino acid, nucleotide, and phosphate metabolism in *Saccharomyces cerevisiae*. *Genetics* 190(3): 885-929.
25. Kayıkcı Ö and Nielsen J (2015). Glucose repression in *Saccharomyces cerevisiae*. *FEMS Yeast Res* 15(6): fov068.

26. Van Mullem V, Wery M, De Bolle X, and Vandehaute J (2003). Construction of a set of *Saccharomyces cerevisiae* vectors designed for recombinational cloning. *Yeast* 20(8): 739-746.

27. Daum G, Böhni PC, and Schatz G (1982). Import of proteins into mitochondria. Cytochrome *b*₂ and cytochrome *c* peroxidase are located in the intermembrane space of yeast mitochondria. *J Biol Chem* 257(21): 13028-13033.