

1 **Supplementary information to:**

2 **Angiotensin II Type 1 Receptor Blockers Increase Tolerance of Cells to Copper and Cisplatin**

3 Pieter Spincemaille<sup>1,\*</sup>, Gursimran Chandhok<sup>2,\*</sup>, Andree Zibert<sup>2</sup>, Hartmut Schmidt<sup>2</sup>, Jef Verbeek<sup>3</sup>, Patrick  
4 Chaltin<sup>4,5</sup>, Bruno P.A. Cammue<sup>1,6,†</sup>, David Cassiman<sup>3</sup>, Karin Thevissen<sup>1,†</sup>

5 <sup>1</sup>Centre of Microbial and Plant Genetics (CMPG), KU Leuven, Kasteelpark Arenberg 20, 3001  
6 Heverlee, Belgium

7 <sup>2</sup>Clinic for Transplantation Medicine, Münster University Hospital, Albert-Schweitzer-Campus 1,  
8 Building A14, D-48149 Münster, Germany

9 <sup>3</sup>Department of Hepatology and Metabolic Center, University Hospital Gasthuisberg, Herestraat 49, 3000  
10 Leuven, Belgium.

11 <sup>4</sup>CISTIM Leuven vzw, Bio-Incubator 2, Wetenschapspark Arenberg, Gaston Geenslaan 2, 3001  
12 Heverlee, Belgium

13 <sup>5</sup>Centre for Drug Design and Discovery (CD3), KU Leuven R&D, Waaistraat 6, Box 5105, 3000  
14 Leuven,

15 <sup>6</sup>Department of Plant Systems Biology, VIB, Technologiepark 927, 9052, Ghent, Belgium

16 \*Both authors contributed equally to this work

17 †Authors coordinated equally

18 **Corresponding authors:**

19 Bruno P.A. Cammue, Centre for Microbial and Plant Genetics, KU Leuven, Kasteelpark Arenberg 20,  
20 3001 Heverlee, Belgium, Phone: 32-16329682. Fax: 32-16321966. E-mail:  
21 bruno.cammue@biw.kuleuven.be

22 Karin Thevissen, Centre for Microbial and Plant Genetics, KU Leuven, Kasteelpark Arenberg 20, 3001  
23 Heverlee, Belgium, Phone: 32-16329688. Fax: 32-16321966. E-mail: karin.thevissen@biw.kuleuven.be

24 **Running title:** Sartans alleviate copper and cisplatin toxicity

25 **Keywords:** Sartans, copper, cisplatin, drug repositioning

26

27 **Supplementary materials and methods**

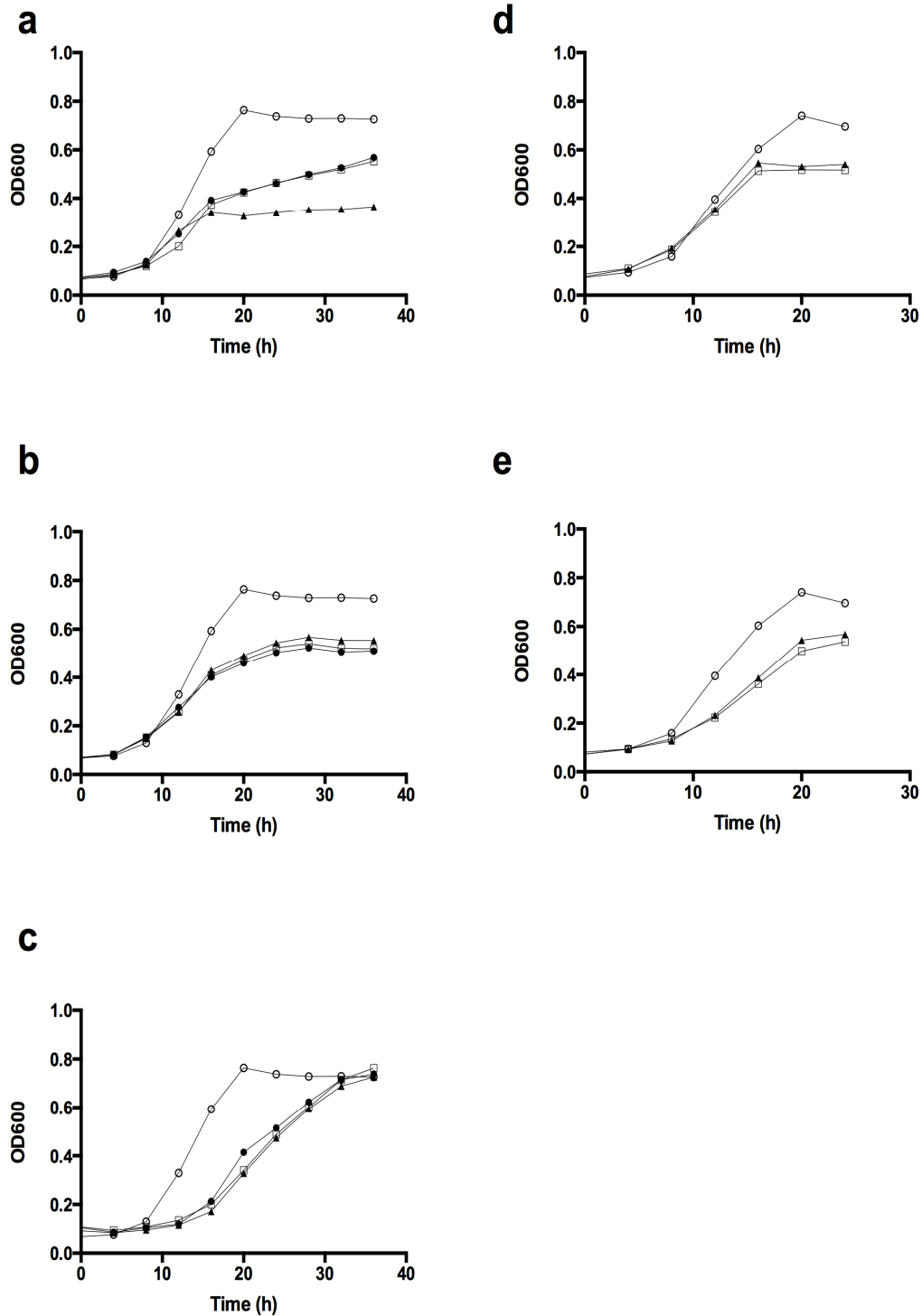
28 **Yeast growth curve determination**

29 An overnight WT yeast culture in SC was diluted to OD600 = 0.01 in fresh SC and incubated with  
30 control (2 % DMSO), 250  $\mu$ M Cp, 2 mM valproic acid, 2.5 $\mu$ M tunicamycin, 8.5 mM acetic acid or  
31 7.81  $\mu$ M CCCP in absence (2 % DMSO) or presence of 100  $\mu$ M Candesartan Cilexetil and/or  
32 Losartan. Growth was monitored for 36 h by analyzing OD600 with a Bioscreen C MBR (Oy Growth  
33 Curves Ab Ltd, Helsinki, Finland). Experiments were performed at 30°C, while shaking continuously at  
34 medium amplitude.

35

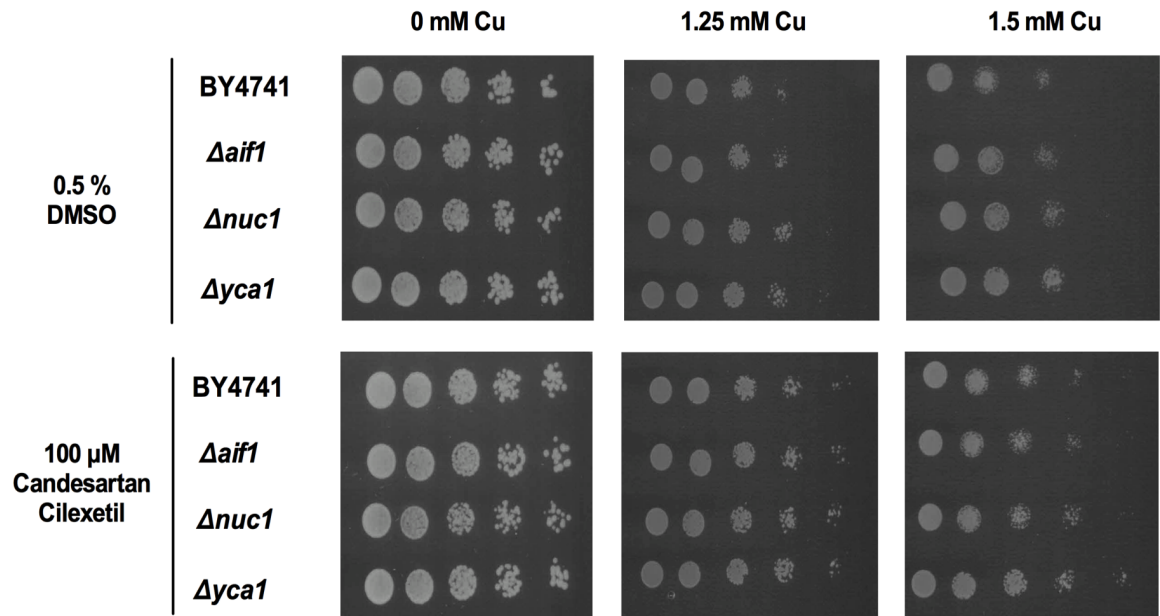
36 **Figure legends**

37 **Supplementary Fig. 1. ARBs do not trigger a general stress-protectant effect in yeast.** Growth of  
38 WT yeast was monitored during 36 h upon treatment with 250  $\mu$ M Cp (a), 2.5  $\mu$ M tunicamycin (b), 2  
39 mM valproic acid (c), 8.5 mM acetic acid (d) or 7.81  $\mu$ M CCCP (e) in absence (control, triangles) or  
40 presence of 100  $\mu$ M Candesartan Cilexetil (full circles) and/or 100  $\mu$ M Losartan (open squares). Growth  
41 of an unstressed yeast culture was included as control (open circles). Data is representative for 2  
42 biological repeats.



43

44 **Supplementary Fig. 2. Cu induces Aif1p, Nuc1p and Yca1p-independent cell death.** Serial dilutions  
45 of wild type (WT), *Δaif1*, *Δnuc1* or *Δyca1* were spotted onto control (0 mM Cu) or Cu-containing  
46 (1.25 mM – 1.5 mM) solid SC media in presence of control (0.5 % DMSO; top panels) or 100 μM  
47 Candesartan Cilexetil (bottom panels). Cell growth was evaluated following 48 h incubation at 30°C.  
48 Data representative for two biological repeats.  
49



50