

Supplemental data: Figure S1

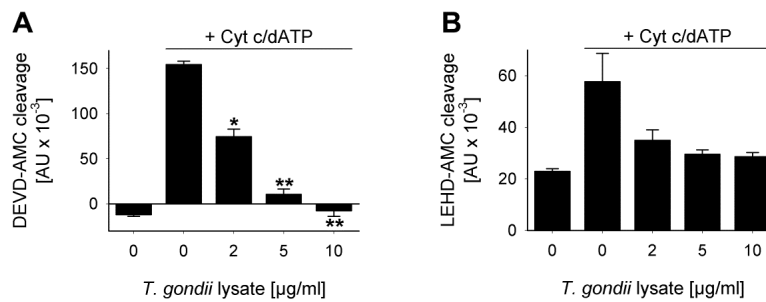


FIGURE S1: Protein extract of *T. gondii* dose-dependently diminishes caspase 3/7 and caspase 9 activities that were triggered in cytosolic T cell extracts by cytochrome c and dATP. (A, B) Cell-free cytosolic extracts of Jurkat cells were incubated with increasing amounts of *T. gondii* lysate or were left untreated. After 1 hour, caspase activation was triggered or not by cytochrome c and dATP as indicated. Cleavage of the caspase 3/7 substrate DEVD-AMC (A) or of the caspase 9 substrate LEHD-AMC (B) was measured fluorimetrically. Data represent the increase in substrate cleavage over time; they represent means \pm S.E.M. from 3 independent experiments. Significant differences were identified by Student's *t*-test (*: $p < 0.05$; **: $p < 0.01$).